

PARBOLA





WELCOME

Welcome to Parbola Holiday Park.

We are so excited that you have chosen us for your Cornish holiday.

To help you get settled in, we've left complimentary Cornish Fairings biscuits, tea and coffee, local apple juice and milk on the kitchen countertop. They go down a treat after a long drive! We have sourced most of our products locally and we hope you love and enjoy them as much as we do. Please check all labels for any allergens.

To help you get into holiday mode, we've rounded up everything you need to know about our local area, from the best days out to what's happening on the park.

Park shop

Our park shop is stocked with all your daily essentials. Please note that bakery orders for croissants and pain au chocolats must be placed by 5pm the day before.

We also have pizza options available in either pepperoni or margarita, both of which are 12 inches in size and priced at £11 each. Please note that our off-peak hours are from 9am to 5pm, while our peak hours are from 8:30am to 6pm.

Some housekeeping

While you're staying with us, we ask that you empty your bins frequently. There are several bin bays located by reception, by unit 1, by unit 29 and by the dining safari tent. We have recycling bins, general waste, glass bins and food waste. Frequently emptying bins will eliminate ants and fly issues.

The park has 4 septic tanks (we are not on mains sewage), please don't flush anything down the toilet other than toilet paper. A nappy bin is located in the accessible toilet in the amenity block or use the general waste bins provided. Thank you.

We hope you have an amazing stay with us.

Nicky and the Parbola Team x



TABLE OF CONTENTS

Park Information	04	Days Out With Teenagers	23
Park Map	05	Pet Friendly Days Out	25
Equipment Instructions	06	Our Top Local Beaches	27
Swimming Pool	08	Seasonal Things To Do	29
Takeaway Pizzas	10	Things To Do On A Rainy Day	31
Park Shop Bakery	11	Top 3 Local Walks	33
B Corp	12	TripAdvisor Review	35
Local Restaurants	13	Thank You	36
Local Supermarkets	15		
Need Fuel Before You Leave?	17		
Family Friendly Days Out	19		
Couples Days Out	21		

PARK INFORMATION

Reception

Opening times — 9am - 5pm (with seasonal variations)

Number — 0333 200 2565

Email — bookings@parbola.co.uk

The Warden

The night warden is here from 5:30pm for emergencies only

Number — 07458 008436

Emergency Numbers

Doctors Praze & Connor – Downs Surgery.

01736 756 271

Dentist Camborne – 01209 611 832

Hospital Truro, Trelick – 01872 250 000

NHS non Emergency – 111

Police non emergency 101

Boots Chemist, Hayle – 01736 756 843

Vets Hayle – 01736 755 555

Autocare, Gwninear Motors – 01209 831 083

Ace cars: 01736 797 799

GB Cabs 01209 714 714

Play Area

- Open from dawn until dusk
- Children must be supervised at all times
- We do not allow electric scooters or hoverboards

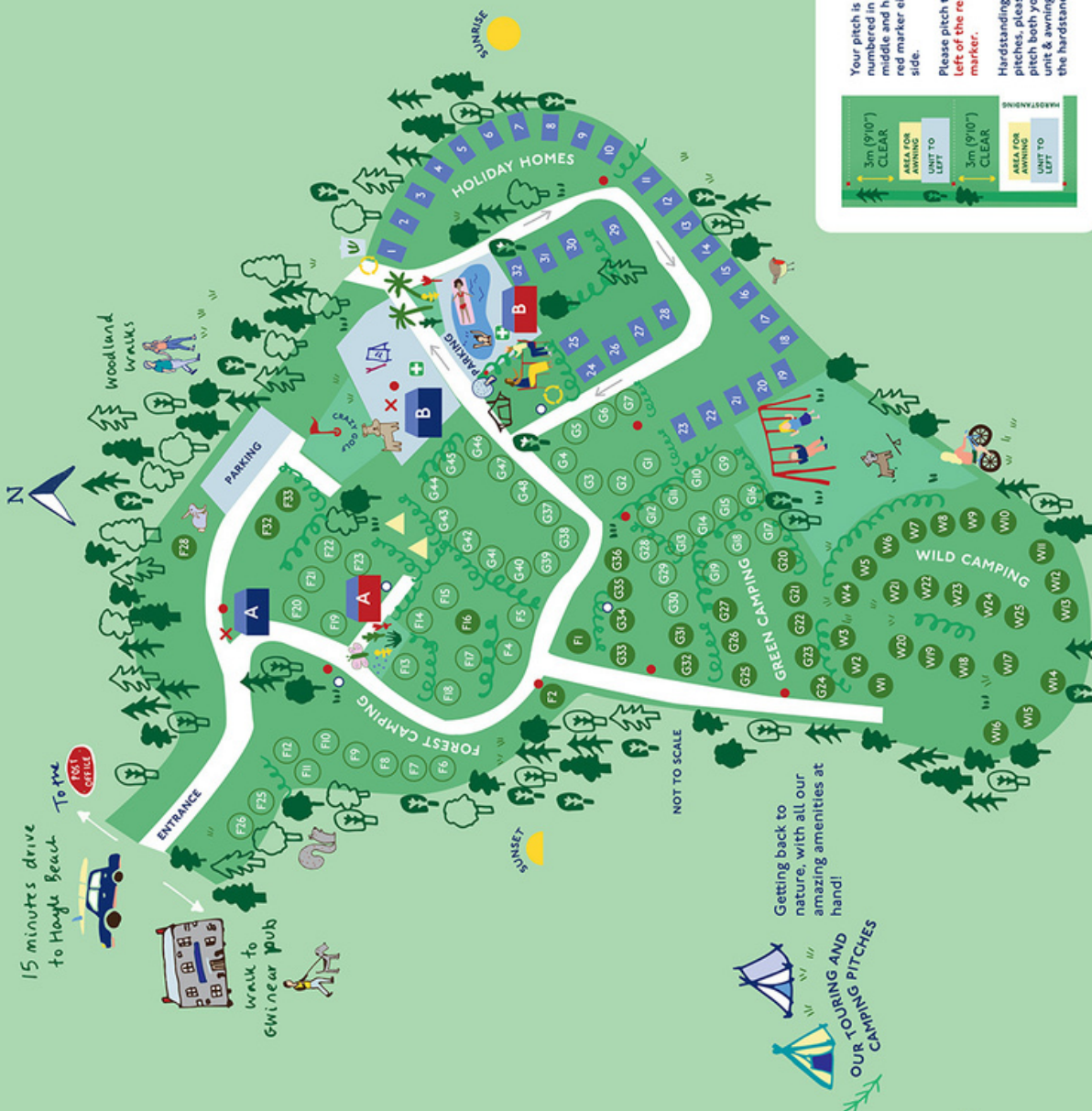
Dog Walking

- We are a dog-friendly park but your furry friends must be kept on a lead at all times.
- Please feel free to use the welcome stations with water, biscuits and free poop bags.
- Please don't walk between the safari tents.
- We have a dog agility area in the children's play park field for your use.
- There is a public footpath; turn left out of the bottom gate and then it's on your right.
- Please note, we don't allow dogs in the swimming pool area or between the safari tents.

Other Arrival Information

- There is private parking for one car. Any additional cars need to be parked at reception.
- Please park your car in the numbered parking bay that corresponds to your holiday home.
- Our park speed limit is 5mph. Please adhere to the one way system.
- We offer a service wash. (Just collect a laundry bag at reception and fill with the clothes to be washed. Fill out the contents form and pay at reception. Cost of £6 for a wash & £6 for a tumble dry. We will text you when the washing is ready to be collected from reception.)

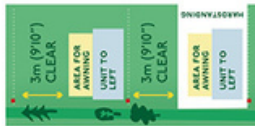
-  Check-in hut
-  Reception, veg prep, water refill, washing up, shop, laundry room, freezer
-  Toilets, washing up, showers
-  Toilets, baby changing, accessible bathroom, showers
-  Camping pitch
-  Electric hook-up
-  Holiday home
-  Safari tents
-  First aid
-  Emergency assembly point
-  Dining tent
-  Beach litter picking station
-  Compost station
-  Water point
-  Fire point
-  Bins & recycling
-  Dog & wetsuit shower
-  Dog agility
-  Table tennis



Your pitch is numbered in the middle and has a red marker either side.

Please pitch to the **left of the red marker**.

Hardstanding pitches, please pitch both your unit & awning on the hardstanding.




The ultimate blend of camping and luxury - complete with hot tub!



Beautifully designed and spacious, you'll find fully-fitted kitchens, stylish furniture, comfy beds and some with private decking.



EQUIPMENT INSTRUCTIONS

We've laid out all the appliance information you need for a hassle-free holiday from day one.



Let's help you settle in with no issues.



Hot Tubs

You can find the official hot tub instructions displayed on the outdoor decking area railings, with there are a few things to take note of here:

- Hot tub water is tested everyday by a member of the team.
- There is a weight restriction in the hot tub, no more than 4 people in the hot tub at any one time.
- Please monitor children at all times.
- Hot tubs are only for safari tent guests.
- Please do not invite other guests to use the hot tub, even if they are staying on park.

Wood Burners

If you need assistance to light the wood burner, please ask at reception. The vent is located under the front of the wood burner. The first basket of logs, a bundle of kindling and firelighters are provided. After this, please purchase from the park shop or locally in the village.

Boiler

The instructions for the boiler can be found on the inside of the boiler cupboard door. If you need any assistance please ask at reception.

Cooker

If the power goes off, the cooker clocks will need to be reset (otherwise it won't work) any issues please contact reception.

TV

Any issues, contact reception.

Windows

Please don't leave windows open in strong winds.

Lastly we appreciate accidents happen, but please let us know if anything is broken or soiled, so we are able to rectify before the changeover day. Thank you!





SWIMMING POOL

Our heated outdoor swimming pool is open from 9 June to 31 August.





POOL RULES

In order to use our swimming pool the lead member of the party (the person who booked the holiday) needs to sign a swimming pool waiver and release liability form from reception. This form covers your whole party for the full length of the stay.

- Pool sessions can be booked at reception.
- We have a morning session 10am – 1pm and an afternoon session 2pm – 5.45pm.
- On booking a session you will be given a swimming band and this must be worn around the wrist (not on the ankle as this cannot be seen in the water).
- Anyone not wearing a band may be asked to leave the pool area as numbers are controlled for safety.
- Once the pool is up to maximum capacity, we need to wait for guests to leave before issuing any more bands for that session. Please return your bands after each session (colours are changed between sessions).
- The gate to the pool is locked and is controlled by reception and monitored via CCTV.

For your safety and the safety of others;

- ♦ In the event of an emergency please press the red button located on the wall, this will raise an alarm and an emergency responder will attend. Otherwise dial 999 at Reception.
- ♦ THERE IS NO LIFEGUARD ON DUTY swimming is at your own risk.
- ♦ No photography or music.
- ♦ No running, shouting, bombing or shoulder rides.
- ♦ NO DIVING this pool has been shallowed to 1.2 meters at the deep end.
- ♦ No food, glass containers or alcohol beverages allowed in the pool area.
- ♦ No Smoking.
- ♦ There are to be no lone swimmers.
- ♦ No dogs allowed in the pool area.
- ♦ The gate to the pool must be kept closed at all times.
- ♦ No inflatables or snorkels, face masks or flippers.
- ♦ We reserve the right to refuse admission.
- ♦ Safety checks are carried out by an emergency responder, please follow all instructions that may be given.
- ♦ The pool is for guest use only and is not open to non-residents.
- ♦ No children under 12 can use the pool without adult supervision.
- ♦ under 3's must be accompanied in the water by a responsible adult at the ratio of 1 adult to 1 child.
- ♦ 4 – 11 years must be accompanied in the water by a responsible adult at the ratio of 1 adult to 2 children.
- ♦ All non-swimmers must be accompanied in the water by a responsible adult at the ratio of 1 adult to 1 non-swimmer.
- ♦ We will not accept responsibility for items left unattended.
- ♦ Appropriate swimwear must be worn, and babies & toddlers must wear waterproof swim pants when in the pool.
- ♦ Please shower before using the pool, sun cream comes off in the water and can affect visibility as the water gets cloudy. If this happens it may be necessary to close the pool.
- ♦ Please use the toilets before getting in the water.
- ♦ CCTV is in operation.

TAKEAWAY PIZZAS

Pizza is served!



Tuck into a 12" pizza – we have margherita or pepperoni for just £11 each.

Served every Saturday 4pm – 7pm and also on some additional evenings throughout the school holidays, please check at reception.



PARK SHOP BAKERY

Treat yourselves to something yummy.



Grab takeaway drinks, croissants and pain au chocolats from the shop from May half term (order in advance) and then throughout peak. We also serve takeaway hot drinks and have a selection of fresh milk, dairy & tinned produce, ice cream, alcohol, chilled cold drinks and Cornish souvenirs.

Our Safari dining tent is situated at the heart of the park. Opening hours will vary throughout the holiday season, so please check the notice board located at our reception.



HELP OUR PLANET B CORP



We're thrilled to be the UK's first B Corp-certified holiday park operator, and we're shaking up the industry with our fresh approach. We believe that businesses can make a positive impact, benefiting our owners, guests, and the environment, as well as our local community.

Our parks are designed to blend in with the surroundings, featuring wildlife-friendly landscapes and fostering relationships with the community. We offer a range of B Corp-certified products from local suppliers in our park shop, including Tarquin's Gin, Cornish Ketchup, and Kittows meats. We also have a collection stand for used toiletry packaging, which we repurpose creatively with a local company called MYGroup.

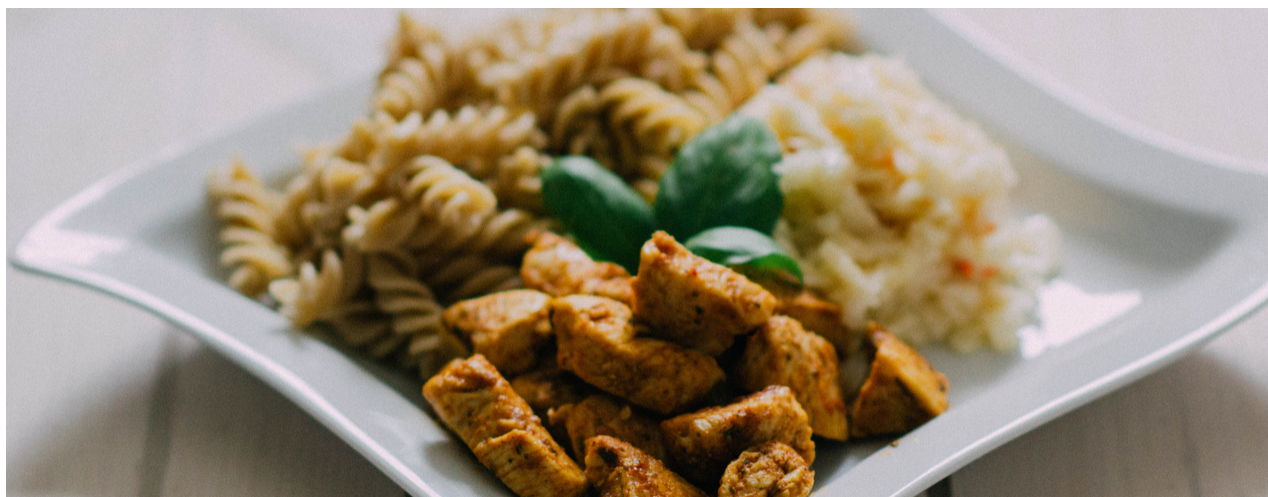
We provide free amenities for our canine campers, such as biscuits, fresh water, and eco-friendly dog bags, and we have a Big 5 nature trail for kids. We offer wooden belly boards and beach clean sets to borrow, and we support local sanctuaries like the Cornish Birds of Prey Centre and the Cornish Seal Sanctuary.

We're proud of our B Corp certification and would love for you to join us in our efforts to protect the environment.

LOCAL RESTAURANTS

Warm welcomes and so much delicious food on your doorstep at Parbola Holiday Park.





Place	Address	More info
Trevaskis Farm Shop & Restaurant	Gwinear Rd, Connor Downs, Hayle TR27 5JQ	A charming gem with animals, 'pick your own' activities, a market, and an authentic Cornish countryside experience. 5 minutes drive from park.
The Shire Inn	Old Shire Inn, The, Pendarves Rd, Camborne TR14 0RT	Village-style pub venue with an open fire in the bar and a beer garden offering an idyllic setting to enjoy a hearty British menu. 10 minutes drive from park.
Birdies Bistro Hayle Estuary	Griggs Quay, Hayle TR27 6JG	Sitting on the edge of the RSPB's Hayle Estuary Nature Reserve boasting prime views over the estuary at all tides and English dishes with a twist. 10 minutes drive from park.
The Royal Standard	50 Churchtown, Gwinear, Hayle TR27 5JL	Welcome to our dog-friendly local pub, offering homemade food, ales and a great beer garden. 5 minutes drive from park.
Angarrack Inn	12 Stemers Hill, Hayle TR27 5JB	Family pub with vegan options, classic dishes, and homemade desserts. Friendly vibe, dog and family-friendly, with garden and parking. 8 minutes drive from park.

LOCAL SUPERMARKETS

Need a top-up shop? Pick up all your essentials and holiday goodies nearby.



Make sure you have everything you need for a holiday feast.



Place	Address	More info
SPAR in Hayle	2 Chapel Terrace, Foundry Square, TR27 4AB	Monday to Sunday 7am to 8pm 11 minutes drive from park.
ASDA Hayle Harbour Superstore	1 South Quay, Hayle TR27 4EP	Monday to Saturday 7am to 11pm, Sunday 10am to 4pm 12 minutes drive from park.
Lidl Hayle	Carwin Rise, Hayle TR27 5PN	Monday to Saturday 8am to 10pm, Sunday 10am to 4pm 10 minutes drive from park.
Aldi	Church Street Camborne TR14 7DF	Monday to Saturday 8am to 10pm, Sunday 10am to 4pm 10 minutes drive from park.
Tesco Extra	Industrial Estate, Pool, Redruth TR15 3QJ	Monday to Saturday 6am to 10pm, Sunday 10am to 4pm 15 minutes drive from park.





NEED FUEL BEFORE YOU LEAVE?

Top up before you hit the road...



The best places to fuel up for your Hayle adventures.



Place	Address	More info
Shell	Carwin Rise, Hayle TR27 5DG	Open 24 hours and offers an EV charging point 9 minutes drive from park.
SPAR Connor Downs	31 Turnpike Rd, Connor Downs, Hayle TR27 5DT	Monday to Saturday 7am to 8pm, Sunday 8am to 7pm 6 minutes drive from park.
SPAR Beatrice Terrace	Beatrice Terrace TR27 4ED	Monday to Sunday 7am to 9pm 10 minutes drive from park.



FAMILY FRIENDLY DAYS OUT

Magical activities and trips are never far away.





Place	Address	More info
St Michael's Mount	St Michael's Mount and Long Stay Marazion Car Park, TR17 0EG	This iconic castle and island is a must-see attraction for families visiting Hayle. Accessible only by boat or by a causeway at low tide, the island offers stunning views of the Cornish coast and a rich history to explore. 20 minutes drive from park.
The Eden Project	PL24 2SG	The Eden Project is a world-famous attraction that features two huge biomes filled with exotic plants from around the world. It's a great day out for teenagers who are interested in science and nature. 1 hours drive from park.
Land's End	Land's End, Sennen TR19 7AA	Stand on the edge of the country at the famous Sennen attraction Land's End and take a family photo next to one of Britain's most beloved landmarks. 40 minutes drive from park.
Paradise Park & Jungle Barn	16 Trelissick Rd TR27 4HY	Just up the road in Hayle is a lovely little local gem; this wildlife sanctuary is home to over 1,000 birds and animals as well as the World Parrot Trust. 10 minutes drive from park.



COUPLES DAYS OUT

Treat your other half to an extra special day out on your romantic Hayle getaway.





Place	Address	More info
St Ives Harbour	St Ives TR26 ILG	Take a romantic stroll around St Ives Harbour and watch the boats coming in and out of the picturesque port. 20 minutes drive from park.
Tate St Ives Gallery	Porthmeor Beach, St Ives, TR26 ITG	Explore the world-renowned Tate St Ives gallery, which showcases modern and contemporary art in a stunning location overlooking Porthmeor Beach. 25 minutes drive from park.
Minack Theatre	Porthcurno, Penzance TR19 6JU	Watch a play or musical under the stars at the unique Minack Theatre, which is set on a cliff overlooking the sea. 45 minutes drive from park.
RSPB Hayle Estuary	Carnsew Pool, TR27 6JF	Go for a peaceful walk along the scenic Hayle Estuary and enjoy the tranquillity of the surrounding wildlife and nature. 11 minutes drive from park.



DAYS OUT WITH TEENAGER

Take the whole family out for some adventure-packed fun in Hayle.





Place	Address	More info
Godrevy Lighthouse	TR27 5ED	Take the whole family on a walk along the beautiful Godrevy Headland and take in the stunning views of the coast and the iconic Godrevy Lighthouse. 15 minutes drive from park.
Coast 2 Coast Karting	Chenhalls Rd, St Erth TR27 6HJ	Whizz around an outdoor track with 12 corners and a mix of hairpins. Suitable for children over 8 years of age. 10 minutes drive from park.
Flambard's Theme Park	Clodgey Ln, Helston TR13 0QA	Flambards has a range of rides that will get any adrenaline junkie excited, from rollercoasters like the Hornet and Sky-Force to the more traditional rides like the Log-Flume and Pirate Ship. 20 minutes drive from park.



PET FRIENDLY DAYS OUT

Why not take your furry friend(s) out to explore around Hayle?





Place	Address	More info
Paradise Park & Jungle Barn	16 Trelissick Rd, Hayle TR27 4HY	This wildlife sanctuary and bird park in Hayle is a great place to take your pet. They welcome well-behaved dogs on leads throughout the park, and there are plenty of opportunities to see animals and birds up close. 10 minutes drive from park.
St Michael's Mount	Folly Field car park, St Michael's Mount and Long Stay Marazion Car Park, TR17 0EG	A historic castle and island located just off the coast of Marazion, dogs on leads are welcome on the island, although they are not allowed inside the castle or gardens. 20 minutes drive from park.
Godrevy Beach	S W Coast Path, Gwithian, Hayle TR27 5ED	Godrevy Beach, near Hayle, is ideal for dog walks. Dogs are permitted on the beach outside of Easter to October, and there are plenty of coastal paths to explore. 12 minutes drive from park.
Tehidy Country Park	Camborne, TR14 0TS	This beautiful park in Camborne has a network of trails and walks to explore with your dog, along with a lake, picnic areas, and plenty of wildlife to spot. 20 minutes drive from park.
Penrose Estate	Penrose Rd, Helston TR13 0RD	It's nestled in the wooded countryside surrounding Cornwall's largest natural lake, and offers a delightful dog friendly mix of woodland tracks, stretches of stunning coastline, and open parkland. 20 minutes drive from park.

OUR TOP LOCAL BEACHES

You're in luck when it comes to beautiful beaches.





Place	Address	More info
Gwithian Towans Beach	Gwithian Towans Beach Hayle TR27 5BX	This long and wide beach offers plenty of space for visitors to spread out and enjoy their surroundings with soft, golden sand perfect for sunbathing or building sandcastles with the family. 10 minutes drive from park.
Carbis Bay Beach	Bay, Beach Rd, Carbis Bay, St Ives TR26 2NP	A Blue Flag beach home to spectacular views of the turquoise sea, golden sand, and rugged cliffs. 20 minutes drive from park.
Sennen Cove	TR19 7DG	A large sandy beach that is perfect for families. Make sure to check the tide times before heading out, as the beach can get quite narrow at high tide. 40 minutes drive from park.
Kyance Cove	On the west side of the Lizard TR12 7PJ	This is one of the most popular beaches in the area, and for good reason. The turquoise waters are crystal clear and the white sandy beach is simply stunning. However, it can get busy during peak season, so it's best to arrive early. 40 minutes drive from park.



SEASONAL THINGS TO DO

Explore local events this year and enjoy your time in our beautiful area.





Place	Info	More info
St Ives Food Festival 12th — 14th May	Porthminster Beach, St Ives, TR26 2EB	The St Ives Food and Drink Festival, held on Porthminster Beach over 3 days, offers top-notch cuisine, local drinks, and family-friendly entertainment. 20 minutes drive from park.
Royal Cornwall Show 8th — 10th June	The Royal Cornwall Showground, Whitecross PL27 7JE	The Royal Cornwall Show showcases the best of Cornish countryside and coastline, with food stalls, music, dance, equestrian displays, and prize-winning animals such as cows, sheep, pigs, and horses. 50 minutes drive from park.
Rock Oyster Festival 27th — 30th July	Dinham House, Wadebridge, PL27 6RH	Let your taste buds dance with joy as you indulge in the festival's renowned Oyster Bar, showcasing the freshest and tastiest oysters from Cornish waters. 1 hours drive from park.
Boardmaster 9th — 13th August	Fistral Beach Newquay TR7 1HY	Taking place across Watergate Bay and Fistral Beach, this is a great festival for music and surf lovers. 40 minutes drive from park.



THINGS TO DO ON A RAINY DAY

From fascinating museums to indoor activities, our beautiful area has a plethora of weather-proof things to do.





Place	Address	More info
Paradise Park & Jungle Barn	16 Trelassick Rd, Hayle TR27 4HY	This attraction has indoor exhibits, including a jungle barn full of exotic birds, a tropical house, and an otter pool. 10 minutes drive from park.
Hayle Heritage Centre	John Harvey House, 24 Foundry Square, Hayle TR27 4HH	This centre tells the story of Hayle's industrial past, including its mining, railway, and fishing history with interactive exhibits and displays. 10 minutes drive from park.
Tate St Ives Gallery	Porthmeor Beach, St Ives TR26 ITG	This art gallery has a large collection of modern and contemporary art, with rotating exhibitions throughout the year. The gallery is partially located underground, so it can be a great place to escape the rain. 30 minutes drive from park.
The Eden Project	Bodelva, Par, PL24 2SG	The Eden Project's experimental gardens feature indoor biomes for visitors to explore, housing plant species from various parts of the globe. 1 hours drive from park.
Cornish Seal Sanctuary	Gweek, TR12 6UG	This rescue and rehabilitation centre for seals has indoor exhibits, including a seal hospital and a penguin pool. There's also an outdoor area where you can see the seals up close. 30 minutes from park.

TOP 3 LOCAL WALKS

Why not take a lovely stroll...



Place	Address	More info
Mylor to Flushing along the coastal path	Start at Mylor Bridge	<p>The Mylor to Flushing walk along the coastal path is a beautiful and scenic 2.5 mile trail.</p> <p>The walk begins in Mylor, a small village located on the western shore of the Carrick Roads estuary, and ends in Flushing, a charming coastal village on the opposite side of the estuary.</p> <p>40 minutes drive from park.</p>
Hayle to St Ives	TR27 5AF	<p>The Hayle to St. Ives walk in Cornwall is a delightful 6-mile trek along the South West Coast Path. Starting from Hayle train station, offering stunning sea views and wildlife spotting opportunities. The walk concludes at St. Ives town centre, where you can explore its art galleries, shops, cafes, and restaurants.</p> <p>10 minutes drive from park.</p>
St Ives Bay	St. Ives, TR26 2NW	<p>This walk follows the coastline of St. Ives Bay, starting at Hayle and continuing to Gwithian. The route offers stunning views of the sea, with opportunities to spot seals and seabirds.</p> <p>15 minutes drive from park.</p>





We'd love to hear all about your stay.
Could you spare a moment to share your experience
with us using the QR code below?

Thank you in advance!

HEY, SCAN ME!





THANK YOU



We hope you enjoy
your stay!

Wall Rd, Gwinear, Hayle TR27 5HA

0333 200 2565

www.lovatparks.com
